



## PROJECT PARTNERS

[www.enlocc.net](http://www.enlocc.net)



Wirtschaftsförderung  
Region Stuttgart GmbH

Stuttgart Region, Germany  
Wirtschaftsförderung Region Stuttgart  
GmbH  
Friedrichstraße 10  
D-70174 Stuttgart  
Holger Bach  
Phone: +49 (0) 711 228 35 59  
hbach@region-stuttgart.de



KLOK Kompetenzzentrum  
Logistik Kornwestheim GmbH  
Stammheimer Straße 10  
D-70806 Kornwestheim  
Hans-Hermann Enders  
Phone: +49 (0) 7154 8274 01  
enders@klok-net.de



Carinthia Region, Austria  
Amt der Kärntner Landesregierung Abteilung  
7, Wirtschaftsrecht und Infrastruktur  
Miestalerstraße 1  
A-9020 Klagenfurt  
Albert Kreiner  
Phone: +43 (0) 463 536 30745  
albert.kreiner@ktn.gv.at



Regione Emilia Romagna, Italy  
Viale Aldo Moro, 38  
I-40127 BOLOGNA  
Rino Rosini  
Phone: +39 051 283831  
rrosini@regione.emilia-romagna.it



Wielkopolska, Poland  
Instytut Logistyki i Magazynowania  
Ul. Estkowskiego 6  
Pl-61-775 Poznan  
Piotr Nowak  
Phone: +48 (0) 61 850 49 36  
piotr\_nowak@ilim.poznan.pl

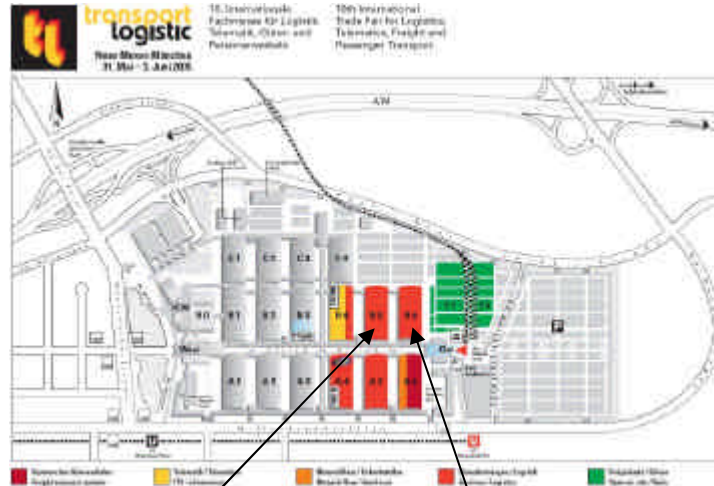


### Travelling to the trade-fair centre

Against presentation of a valid exhibitor's pass, you may use public transportation (MVV) to travel to and from the trade-fair centre free of charge during the fair. Take the U2 subway line to "Messestadt Ost".

During *transport logistic* shuttle-bus service will be available between the airport and the trade-fair centre.  
Stops at airport: Terminal 1 & 2.  
Stop at trade-fair centre: East Entrance.

The New Munich Trade Fair Centre is also easy to reach by car. You can take the A94 motorway to drive into town or the Eastern motorway ring to the airport.



Emilia-Romagna Region exhibition stand  
Hall B5 - Stand 207/310

BeGU exhibition stand  
Hall B6 - Stand 106

## Invitation to transport logistic



### EVENT

**EUROPEAN LOGISTICS COMPETENCE CENTRES:  
EXCHANGING EXPERIENCES AND BEST PRACTICES**

**TOWARDS A EUROPEAN NETWORK**

**1st June, 11.00 AM - Hall B5, Stand 207/310**



## INFO POINT

**31st May - 3rd June**  
**BeGU exhibition stand - Hall B6 - Stand 106**

## Announcement of



**AUTUMN 2005**  
**Bologna**  
**Emilia-Romagna Region premises**

1

# Invitation to

Event of 

**EUROPEAN LOGISTICS COMPETENCE CENTRES:  
EXCHANGING EXPERIENCES AND BEST PRACTICES  
TOWARDS A EUROPEAN NETWORK**

*Transport Logistic 2005*  
New Munich Trade Fair Centre  
1st June - Hall B5, Stand 207/310

- 11.00 - 11.20 Opening  
Rino Rosini, Transport and Logistics Department - Emilia-Romagna Region (Bologna, Italy)  
*" Supporting companies competitiveness by means of logistics: projects, financing and innovations "*
- 11.20 - 11.35 Hans-Hermann Enders, KLOK GmbH (Stuttgart, Germany)  
*" Logistics Competence Centres as private-public logistics interfaces and their European Network ENLoCC "*
- 11.35 - 11.50 Jean-André Lasserre, AFT-IFTIM (Paris, France)  
*" Training in transport & logistics: enterprises' training requirements and logistics jobs standards in Europe "*
- 11.50 - 12.05 Zeno D'Agostino, LOGICA (Naples, Italy)  
*" The role of a LoCC in integrating regional logistics infrastructures and in promoting the regional logistics supply "*
- 12.05 - 12.20 Gilberto Galloni, EUROPLATFORM (Brussels, Belgium)  
*" EUROPLATFORM's point of view on LoCCs "*
- 12.20 - 13.00 Panel discussion coordinated by Rino Rosini
- 13.00 Meeting closure: Emilia-Romagna typical food & wine buffet

2

# Invitation to



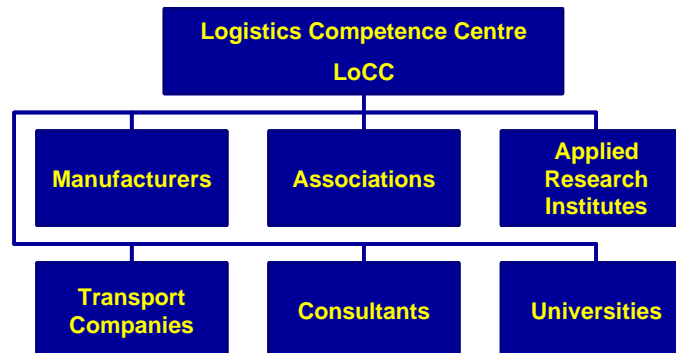
**INFO POINT**  
BeGU exhibition stand  
Hall B6 - Stand 106

*Transport Logistic 2005*  
New Munich Trade Fair Centre  
31st May - 3rd June

## Information about

### EUROPEAN NETWORK OF LOGISTICS COMPETENCE CENTRES

A strong partnership for regional logistics development



3

# Announcement of



AUTUMN 2005 in Bologna

## You are invited to work together for a European Network of Logistics Competence Centres

Event co-organised by the ENLoCC project partners

European organizations, bodies and companies meet, cooperate, network and set up European joint initiatives and projects in freight transport and logistics

<b>Logistics Nodes</b> Terminals, freight villages, logistics centres	<b>Long / Short Distance Transport</b> City, regional and international logistics
<b>Logistics Chain Outsourcing</b>	<b>Technical Solutions</b> Means of transport, loading / unloading
<b>Telematics</b>	<b>Jobs Education Training</b>
<b>Research and Development</b>	<b>Regulations</b>